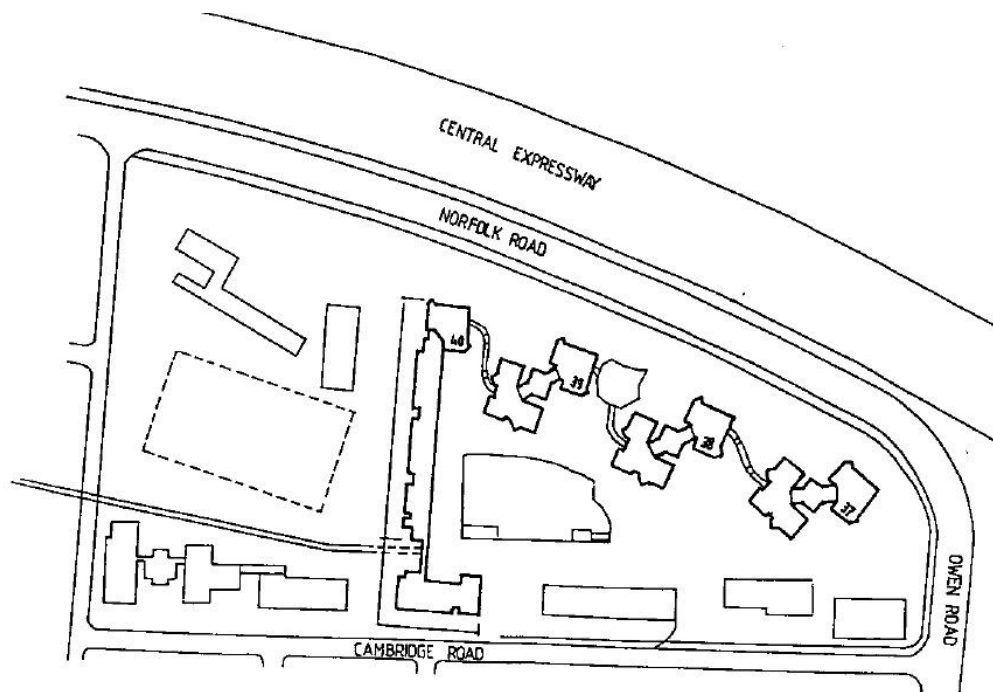


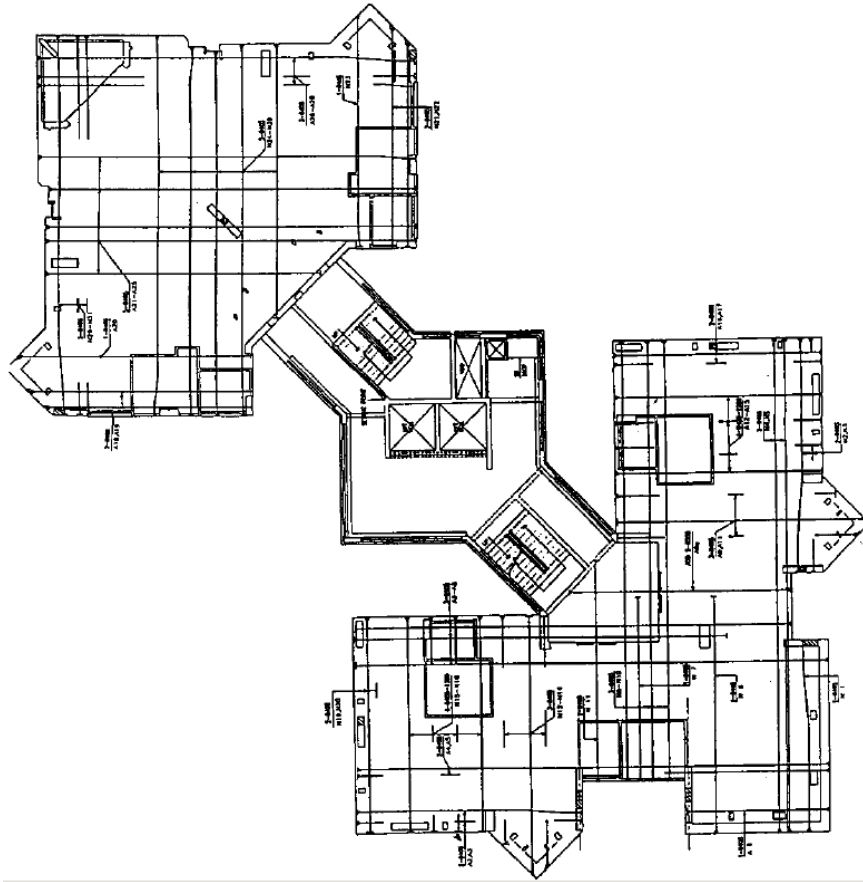
Redevelopment Contract 11 at Kallang / Whampoa for Housing Development Board of Singapore

Works undertaken:

- ✚ Concept at planning stage
- ✚ Tender design
- ✚ Detail design
- ✚ Finite element analysis for post-tensioning design of the flat slab
- ✚ Earthquake analysis
- ✚ Design drawing production
- ✚ Construction supervision and inspection



Site Plan



Plan layout: typical floor of the tower block: post-tensioning layout



Tower blocks –view from distance (No. 37, 38 and 39 from right to left)



Full view of Tower Block 37